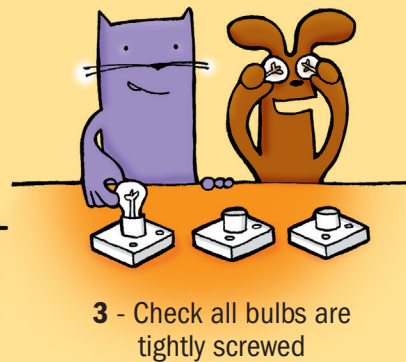
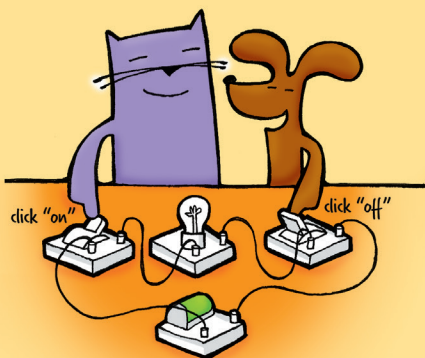
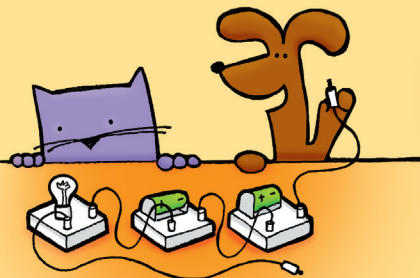


Circuit training

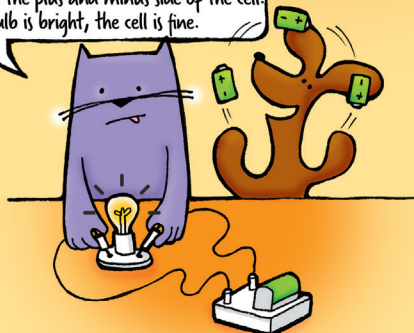
If your circuit is not working:

1 - Check that there are no gaps in the circuit

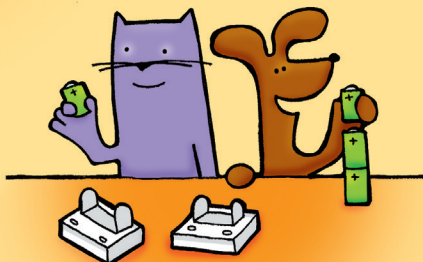


4 - Check the cells are not flat

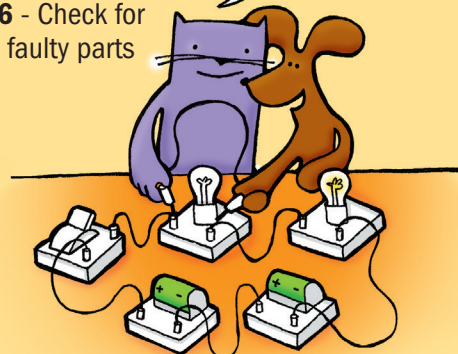
You can do this by connecting a bulb between the plus and minus side of the cell. If the bulb is bright, the cell is fine.



2 - Check that all switches are turned on



6 - Check for faulty parts



5 - Check all cells are the same way round

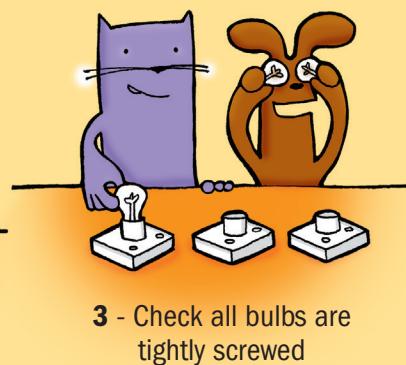
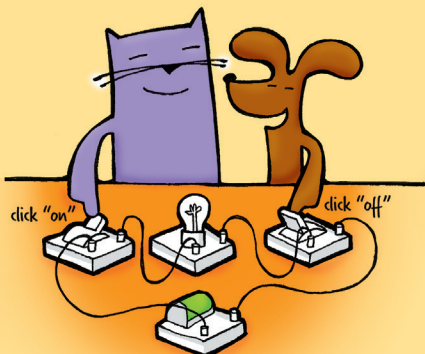
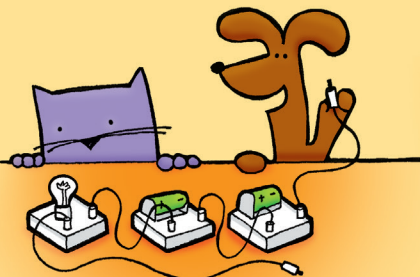
IOP Institute of Physics

www.iop.org/explore-physics

Circuit training

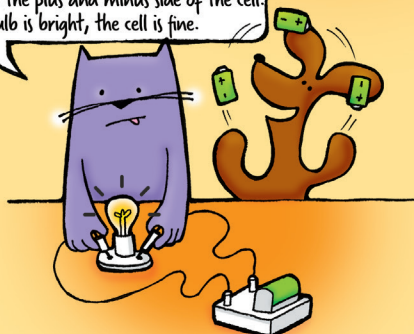
If your circuit is not working:

1 - Check that there are no gaps in the circuit

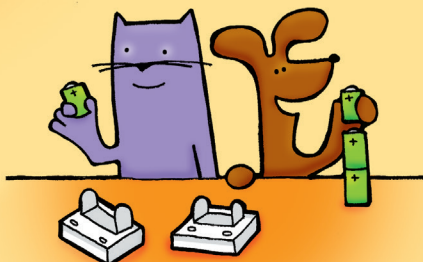


4 - Check the cells are not flat

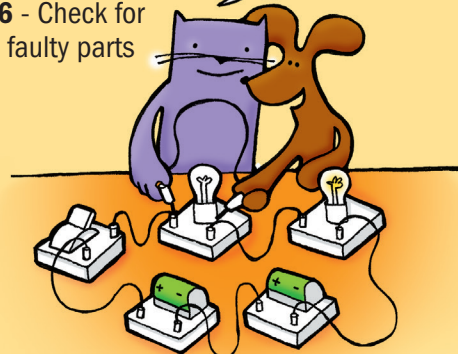
You can do this by connecting a bulb between the plus and minus side of the cell. If the bulb is bright, the cell is fine.



2 - Check that all switches are turned on



6 - Check for faulty parts



5 - Check all cells are the same way round

IOP Institute of Physics

www.iop.org/explore-physics