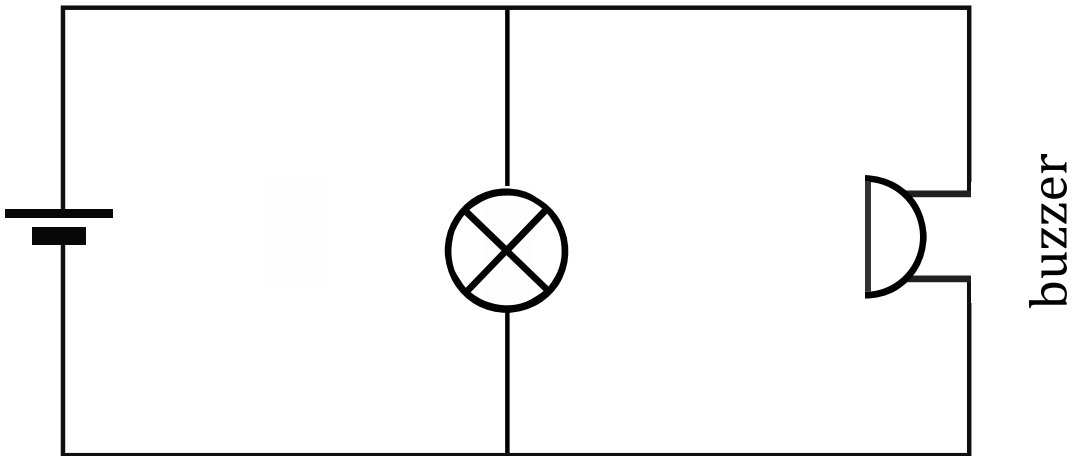


Bulb and Buzzer in Parallel

Connect up the battery to the bulb alone. Does it light up? Connect up the battery to the buzzer alone. Does it buzz? Connect up the battery to the bulb and buzzer in parallel:



Use a voltmeter to make the following measurements (with the circuit complete):

Voltage across battery: volt

Voltage across bulb: volt

Voltage across buzzer: volt

Discuss these 3 measurements with your partner.

Do the measurements make sense? YES/NO

Explain your YES/NO answer: