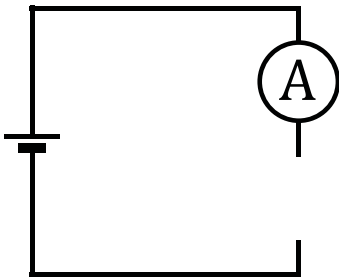


# Adding batteries to the circuit

First of all make a circuit with a single device: bulb or buzzer or bell or motor. Add batteries and record the ammeter readings. Discuss your findings with your partner. Try to come up with an explanation for what you have found out.

one battery



Current= \_\_\_\_\_ A

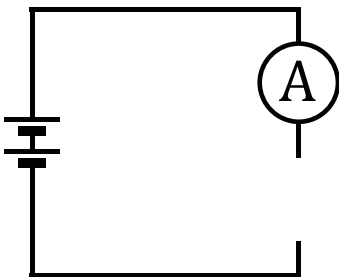
What happens?

---

---

---

two batteries



Current= \_\_\_\_\_ A

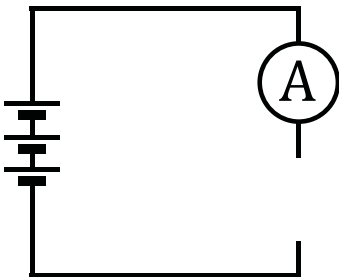
What happens?

---

---

---

three batteries



Current= \_\_\_\_\_ A

What happens?

---

---

---