

DO TRY THIS AT HOME

issue #90

Featuring: **Marvin and Milo**

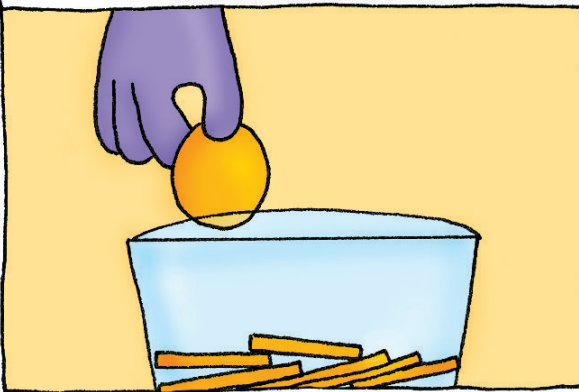
What you need: • Some washing up liquid
• A glass of water • A pile of coins • A saucer

Wait Milo, let's put your pocket money to good use in this experiment!

Fill the glass to the very brim with water and place on top of the saucer.

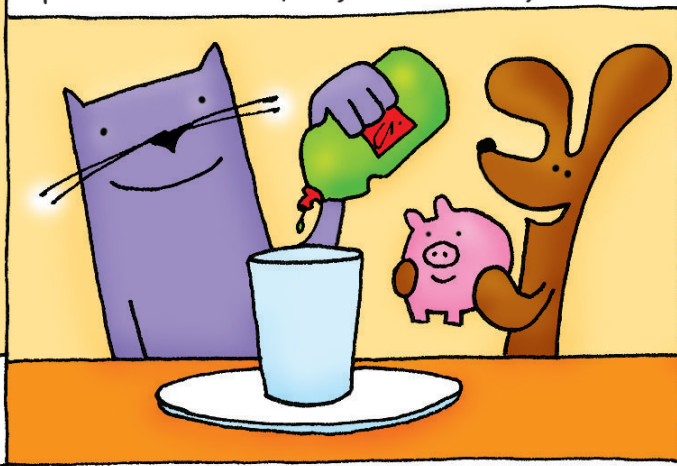
Vic Le Billon

Carefully drop a coin into the water, edge first.



Slowly and carefully drop more coins into the water - how many can you add before the glass overflows?

Try again, but this time add a few drops of washing up liquid to the water before you start adding the coins.



Water molecules are strongly attracted to each other, creating a surface tension that allows the water to bulge over the top of the glass as you add the coins. But washing up liquid reduces the surface tension so the glass overflows sooner.

