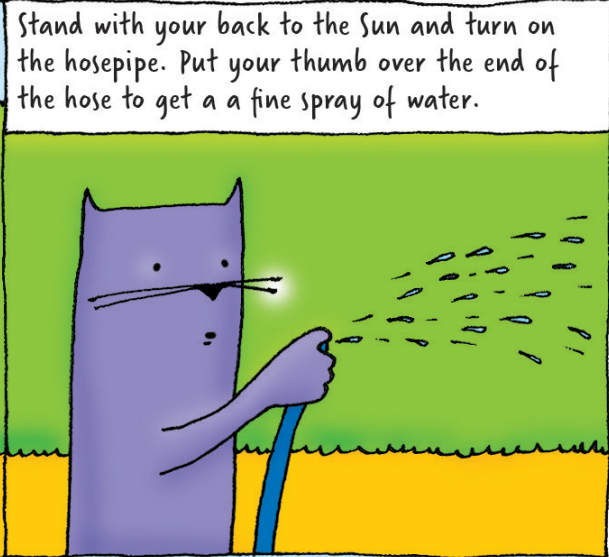


DO ~~NOT~~ TRY THIS AT HOME

Featuring: Marvin and Milo

issue #71

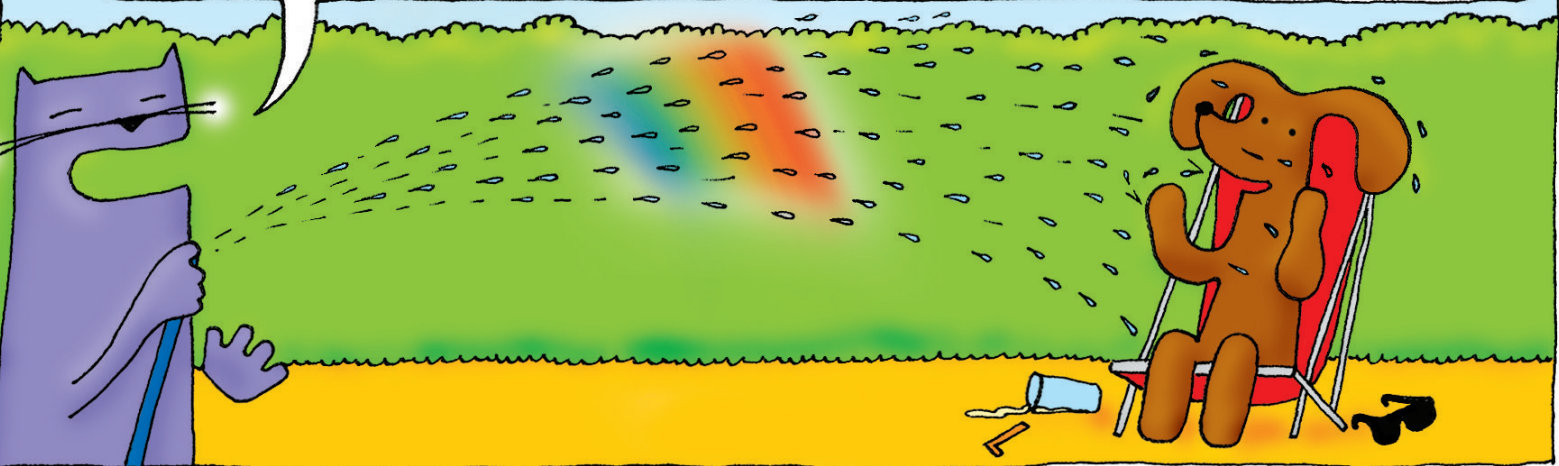
What you need: • A hosepipe • A garden • A sunny day



Look at the spray against a dark background such as a wall, hedge or grass.

White light from the Sun is made up of light of different wavelengths, or colours. The different wavelengths of light are bent by different amounts as they pass through the water, splitting the white light into all the colours of the rainbow.

Adjust your position and the fineness of the spray until you see a rainbow!



Vic Le Billon